



**| FASHION & LIFESTYLE**



**SHOP FITTINGS FOR ALL PURPOSES**

Wanzl Nordic has an extensive range of standard products for the fashion and lifestyle category. Each system consist of well-proven fixtures that can be customized in color and material to fit the need of the individual customer – without compromising the functionality and high quality product.



**CONTENT**

Essential	4
Fashion	12
Frame	22
Basic 2	30
Modern	36
Counter	56
Colors & decors	62

## | ESSENTIAL

Essential is a basic shelving system suitable for home, lifestyle and home accessories. The shelves come in widths of 60 and 90 cm and have a carefully selected accessory package consisting of shelves in wood or metal, suspension beams and hooks, which gives the opportunity to create a varied expression with different product types presented in an inviting way.

- Shelving system with a selection of fittings
- Stylish, modern and raw expression
- Module dimensions 60 and 90 cm
- Available in several colours



FLOOR SECTIONS



FLOOR SECTION START

Item no.	Dimensioner	RAL/Decor
F&H010	L90 x D40 x H240 cm	Optional
F&H020	L90 x D50 x H240 cm	Optional



FLOOR SECTION FOLLOW

Item no.	Dimensions	RAL/Decor
F&H011	L90 x D40 x H240 cm	Optional
F&H0	L90 x D50 x H240 cm	Optional



FLOOR SECTION START

Item no.	Dimensions	RAL/Decor
F&H022	L90 x D40 x H140 cm	Optional



FLOOR SECTION FOLLOW

Item no.	Dimensions	RAL/Decor
F&H023	L90 x D40 x H140 cm	Optional



SHELF

Item no.	Dimensions	RAL/Decor
02789890	L90 x D40 x H20 cm	White

Use 2 x shelf connection (02109683).



## ACCESSORIES



### SHELVING BEAM 90M

Item no.	Dimensions	RAL
02109683	L90 cm	Optional



### BEAM FOR HOOKS, CENTER 90M

Item no.	Dimensions	RAL
01622953	L90 x D54 cm	Optional



### BEAM FOR HOOKS, REAR 90M

Item no.	Dimensions	RAL
02110753	L90 x D40 cm	Optional



### HOOK W. PLASTIC COVERED TIP, 5 MM/11L

Item no.	Dimensions	RAL
01684014	L11 cm	Optional



### HOOK W. PLASTIC COVERED TIP, 5 MM/15L

Item no.	Dimensions	RAL
01684024	L15 cm	Optional



### HOOK W. PLASTIC COVERED TIP, 5MM/20L

Item no.	Dimensions	RAL
01684034	L20 cm	Optional



### HOOK FOR PANEL, L20

Item no.	Dimensions	RAL
00610943	L20 cm	Optional



## | FASHION

Fashion fixtures for clothing stores are designed to create an effective and stylish presentation of clothing and accessories in any type of fashion store. The system is offered in module sizes 60 and 90 cm with a number of accessories such as shelves and various racks.

In addition, a number of floor modules such as clothing racks, t-racks, round hangers, sales tables and displays.

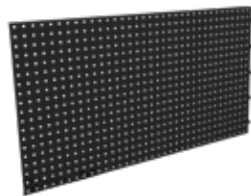
- System for fashion stores and shop-in-shop
- Many applications
- Customised design with colors and surfaces

FASHION / WALL SYSTEM



WALL SECTION RAIL

Item no.	Dimensions	RAL
05412763	H240 x W2.5 x D35 cm	Optional
05412753	H300 x W2.5 x D35 cm	Optional



PERFEX PANEL

Item no.	Dimensions	RAL
01983593	L60 x H64 cm	Optional
01983603	L120 x H64 cm	Optional



SHELF

Item no.	Dimensions	Decor
860F-002	L57 x D40 x H2 cm	Oak
860F-001	L117 x D40 x H2 cm	Oak



SHELF FRAME

Item no.	Dimensions	RAL
01626703	L60 cm	Optional
01626663	L120 cm	Optional



RAIL

Item no.	Dimensions	RAL
01623433	L60 cm	Optional
01623423	L120 cm	Optional

FASHION / WALL SYSTEM



HOOK

Item no.	Dimensions	RAL
01623363	L30 cm	Optional

HOOK

Item no.	Dimensions	RAL
01628833	L30 cm	Optional

RAIL

Item no.	Dimensions	RAL
01623393	L60 cm	Optional
01623993	L120 cm	Optional

HOOK

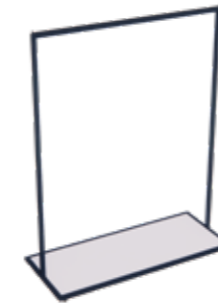
Item no.	Dimensions	RAL
01699463	L20 cm	Optional
01699473	L30 cm	Optional







FASHION / RACKS



RACK		
Item no.	Dimensions	RAL/Decor
01753283	L40 x W120 x H150 cm	Optional/White

RACK		
Item no.	Dimensions	RAL/Decor
01753333	L40 x W120 x H150 cm	Optional/White

RACK		
Item no.	Dimensions	RAL
02003903	H156 x Ø80 cm	Optional

Not adjustable.

T-RACK		
Item no.	Dimensions	RAL/Decor
01753293 (without castors)	From H153 to H183 cm	Optional/White
01753303 (with castors)	From H157 to H187 cm	Optional/White

With a scratch-resistant lining. Adjustable height.

SIGN HOLDER		
Item no.	Dimensions	RAL/Decor
Fashion001	A4	Optional

To be used with 01753293 and 01753303.

FASHION / TABLE, BOXES AND STY



**TABLE**

Item no.	Dimensions	RAL/Decor
01747463	L180 x W90 x H74 cm	Oak



**TABLE**

Item no.	Dimensions	RAL/Decor
02840070	L120 x W40 x H46 cm	Oak



**STABEL BOX**

Item no.	Dimensions	RAL
01747483P	L56 x D30 x H20 cm	Optional
01747473P	L30 x D60 x H30 cm	Optional



**BOX WITH DRAWER**

Item no.	Dimensions	RAL/Decor
02826970	W60 x W60 x L60 cm	Optional/White



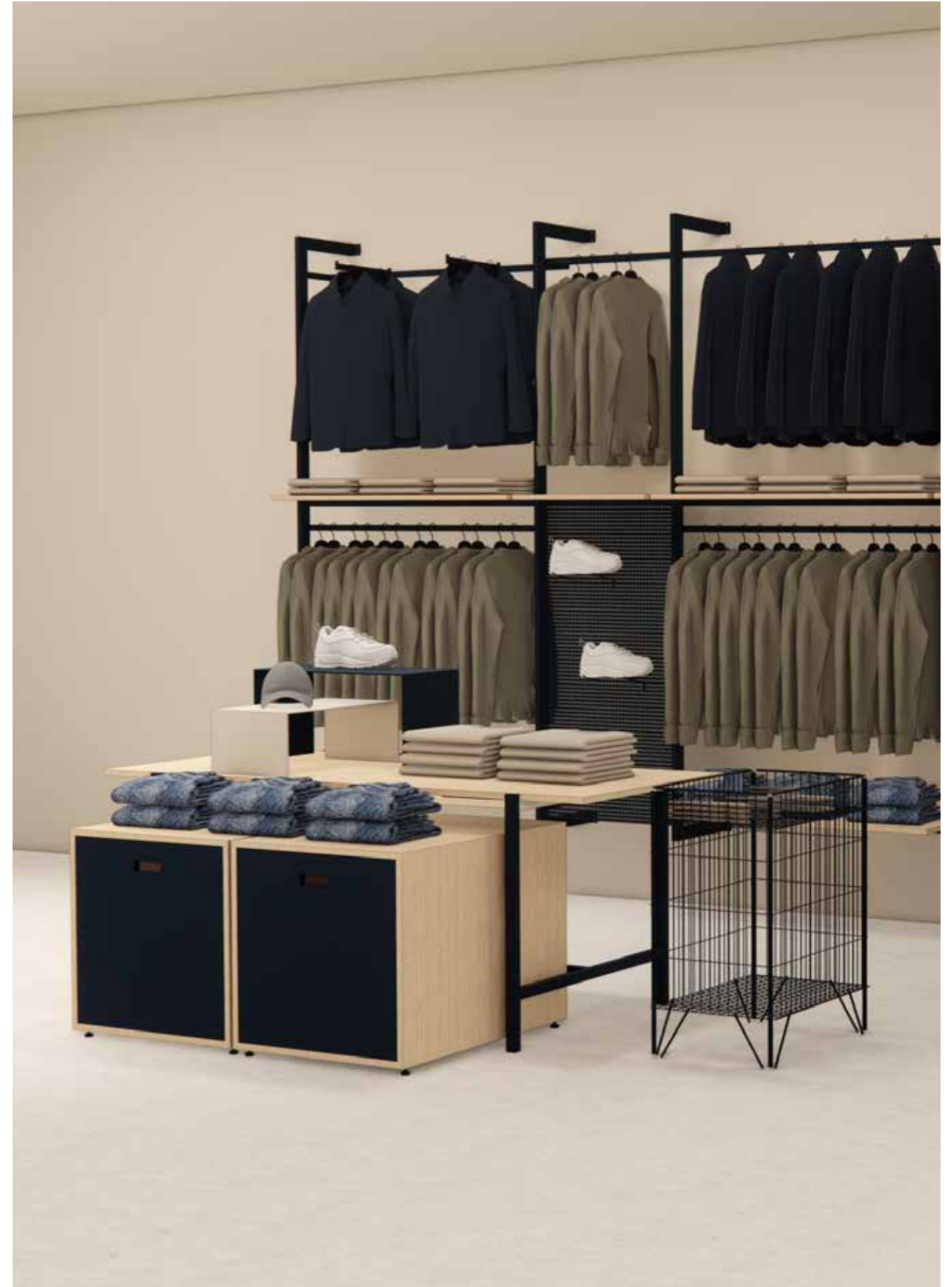
**STY**

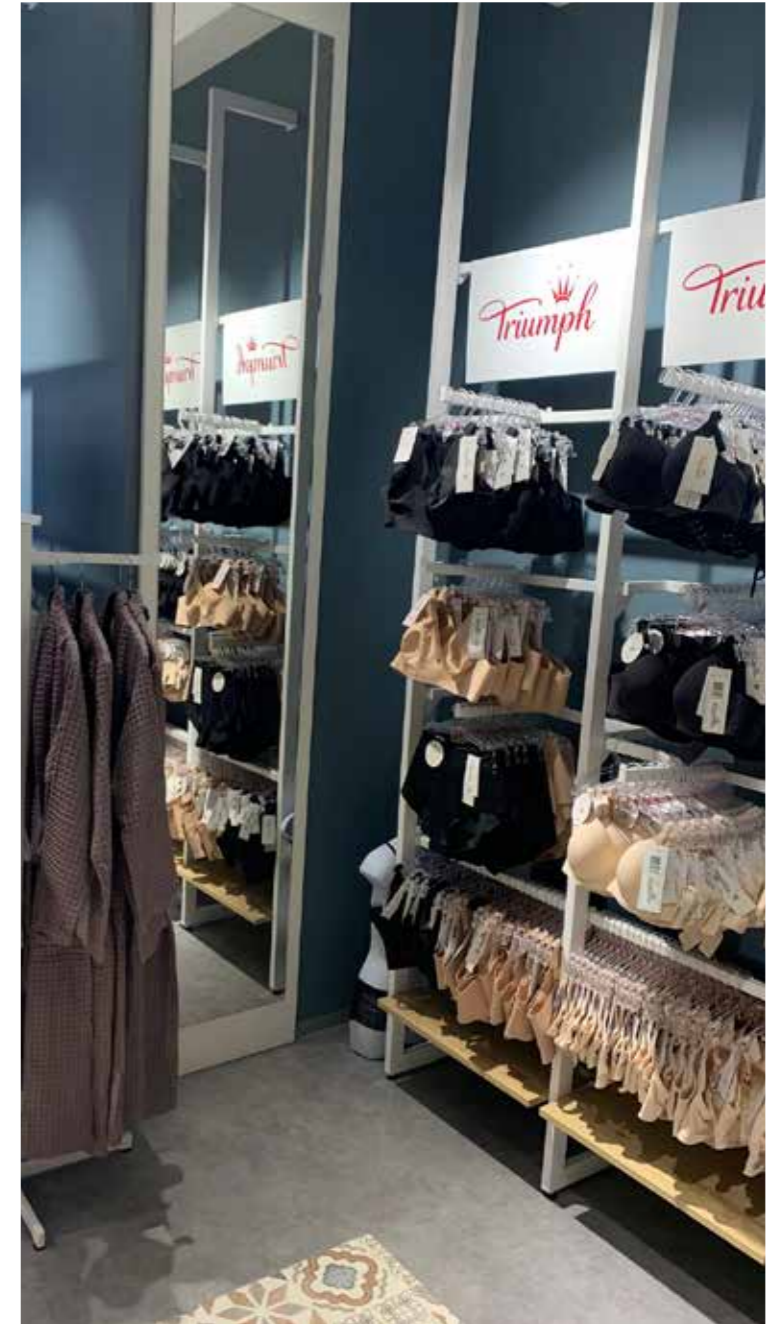
Item no.	Dimensions	RAL
STY	60 x 40	Optional
STY1	60 x 40	Optional



**BASKET**

Item no.	Dimensions	RAL
865B0010	L66 x D48,5 x H86,2 cm	Optional





## | FRAME

Display in a light and fashionable way. The Frame system is suitable for a minimalistic and clean expression to display light weight products such as fashion or accessories. The system consists of shelving racks with stock boxes and a number of floor units for a varied presentation of small goods.

## FLOOR SYSTEM



### FLOOR SECTION START

Item no.	Dimensions	RAL/Decor
EUROSHOP2020-001	L67 x D40 x H190 cm	Optional



### FLOOR SECTION FOLLOW

Item no.	Dimensions	RAL/Decor
EUROSHOP2020-002	L67 x D40 x H190 cm	Optional



### SIGNAGE

Item no.	Dimensions	RAL
01220603	L50 x H10 cm	Optional



### MOODBOARD

Item no.	Dimensions	RAL
01431723P	L67 x D2 x H76 cm	Optional



### SHELF

Item no.	Dimensions	RAL/Decor
01431713P	L69 x D36 cm	Optional

### SHELF BRACKET

Item no.	Dimensions	RAL/Decor
02110273	L2 x D38 x H1 cm	Optional

2 pieces are used per shelf.

## BOXES AND PODIUM



### DISPLAY BOX

Item no.	Dimensions	RAL/Decor
02811753	L65 x D39 x H36 cm	Optional



### STOCK BOX ON WHEELS

Item no.	Dimensions	RAL/Decor
02811733	L65 x D39 x H36 cm	Optional



### PODIUM

Item no.	Dimensions	RAL/Decor
01741813P + 02811773P	L76 x D36 x H80	Optional



“Forget something we’ve got it”

“Wish you a happy holiday”

cosmetics

lighted

PODIUMS AND BENCH



HEXAGON PODIUM SMALL		
Item no.	Dimensions	RAL/Decor
01741743P	L35 x W40 x H52 cm	Oak



HEXAGON PODIUM MEDIUM		
Item no.	Dimensions	RAL/Decor
01741753P	L35 x W40 x H56 cm	Oak



HEXAGON PODIUM LARGE		
Item no.	Dimensions	RAL/Decor
01741763P	L35 x W40 x H71 cm	Oak



BENCH		
Item no.	Dimensions	RAL/Decor
02826983	L40 x W90 x H48 cm	Oak

BENCH AND DISPLAY



HEXAGON BENCH		
Item no.	Dimensions	RAL/Decor
EUROSHOP2020-004	L141 x W123 x H42 cm	Oak



WOODEN ADD-ON DISPLAY		
Item no.	Dimensions	RAL/Decor
00609523P	L30 x H13 x D25 cm	Oak

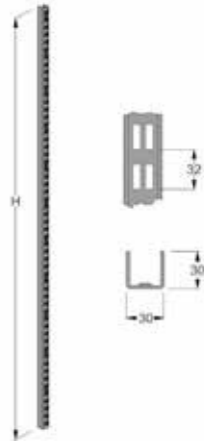


## | BASIC 2

With Basic 2, you can present your customers with a simple, flexible and customer-friendly store layout. And at the same time, the inventory system is easy to handle for the store's employees. The system has countless combination options and is the optimal basic inventory solution for virtually all industries. Basic 2 meets the requirements for an attractive and simple presentation that contributes to creating the store's profile and expression.



UPRIGHTS, SHELVES AND BRACKETS



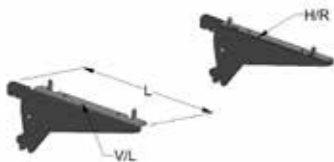
UPRIGHT FOR WALL FIXING

Item no.	Dimensions	RAL/Decor
054-0001-3	180H cm	Optional
054-0002-3	219H cm	Optional
054-0746-3	232H cm	Optional
054-0747-3	267H cm	Optional



WOODEN SHELF MELAMINE

Item no.	Dimensions	RAL/Decor
019-6173-0	90M 40D	Optional
019-6175-0	90M 50D	Optional
019-6176-0	60M 40D	Optional
019-6178-0	60M 50D	Optional
01961790	90M 40D	White
01961810	90M 50D	White
01961820	60M 40D	White
01961840	60M 50D	White



BRACKET ADJUSTABLE

Item no.	Dimensions	RAL/Decor
080-7987-3	30L Left	Optional
080-7988-3	30L Right	Optional
080-7991-3	40L Left	Optional
080-7992-3	40L Right	Optional
080-7995-3	50L Left	Optional
080-7996-3	50L Right	Optional
082-3666-3	60L Left	Optional
082-3667-3	60L Right	Optional





## ACCESSORIES



### SINGLE HOOK WITH PLASTIC COVERED TIP

Item no.	Dimensions	RAL/Decor
016-8400-4	Ø5,0 mm 5L	Optional
016-8401-4	Ø5,0 mm 11L	Optional
016-8402-4	Ø5,0 mm 15L	Optional
016-8403-4	Ø5,0 mm 20L	Optional
016-8404-4	Ø5,0 mm 25L	Optional
016-8405-4	Ø5,0 mm 30L	Optional



### FLAT RAIL

Item no.	Dimensions	RAL/Decor
016-6800-4	90M	Gloss zinc
016-6793-3	60M	Painted overcoat

25x6 mm steel

## | MODERN

Wanzl Nordic's fixtures for fashion stores are designed to create an efficient and stylish presentation of clothing and accessories in any type of fashion store. The system is offered in both 30, 60 and 90 cm modules with various accessories such as shelves, racks and front and side hangers, which allow you to create a versatile product display. In addition to wall fixtures, there are a number of floor modules such as clothing racks, t-racks, sales tables and displays.



## DISPLAYS



### FLOOR DISPLAY

Item no.	Dimensions	RAL/Decor
01753913	L130 x D50 x H220 cm	Optional



### FLOOR DISPLAY

Item no.	Dimensions	RAL/Decor
0175286 (with mirror)	L130 x D50 x H220 cm	Optional
0175326	L130 x D50 x H220 cm	Optional

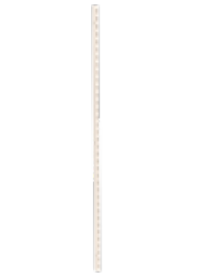


### RACK DISPLAY SHELF

Item no.	Dimensions	RAL/Decor
01752853P	L60/65 x D40 x H151 cm	Optional

Incl. 4 removable shelves.

## WALL SYSTEM / 60 M



### UPRIGHT

Item no.	Dimensions	RAL/Decor
05602653	W20 x D40 x H182 cm	Optional

Wall bracket, 2 pcs per upright (05500083).



### HANGER

Item no.	Dimensions	RAL/Decor
02111713	L35 cm	Optional
02111143	L95 cm	Optional



### SHELF

Item no.	Dimensions	RAL/Decor
02826773	L120 x D35	Melamine
02826833	L120 x D40	Melamine



### FRONT HOOK

Item no.	Dimensions	RAL/Decor
02109583	L30 cm	Optional





## RACKS AND SIGN



### T-RACK

Item no.	Dimensions	RAL/Decor
03123043	From H121 to H176	Optional

Adjustable height.



### RACK DISPLAY

Item no.	Dimensions	RAL/Decor
01752843P	L104/135 x D50 x H150 cm	Optional



### T-RACK FOR TABLE

Item no.	Dimensions	RAL/Decor
02414593	H55 cm	Optional

Adjustable.



### SIGN HOLDER FOR RACK

Item no.	Dimensions	RAL/Decor
01229403P	A4	Optional

Incl. A4 plastic pocket 2 mm.



TABLES, PODIUMS AND ACCESSORIES



**TABLE**

Item no.	Dimensions	RAL/Decor
01747463	L180 x W90 x H74 cm	Optional



**TABLE**

Item no.	Dimensions	RAL/Decor
02840070	L120 x W40 x H46 cm	Oak

**FLOOR PODIUM**

Item no.	Dimensions	RAL/Decor
02840060	L115 x W38 x H15 cm	Oak



**HOLDER FOR SIGN**

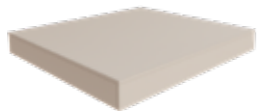
Item no.	Dimensions	RAL/Decor
01747423	L13 X W13 X H20-49 cm	Optional

Adjustable.



**JEWELRY WOOD RACK**

Item no.	Dimensions	RAL/Decor
0284069	L21 x W10 x H32 cm	Oak



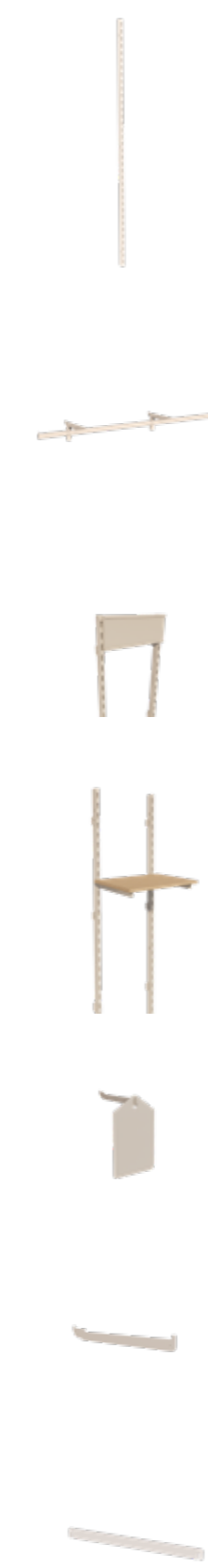
**FLOOR PODIUM FOR RACK**

Item no.	Dimensions	RAL/Decor
0284005	L130 x W120 x H15 cm	Oak





## MODERN FOR LINGERIE / 35M



### UPRIGHT

Item no.	Dimensions	RAL/Decor
05602653	W20 X D40 x H182 cm	Optional

Wall bracket, 2 pcs per upright (05500083).

### HANGER

Item no.	Dimensions	RAL/Decor
02111713	L35 cm	Optional
02109603	L70 cm	Optional
02109643	L105 cm	Optional

### TOP SIGN

Item no.	Dimensions	RAL/Decor
01735963	L35 x H15 cm	Optional

### BRACKET AND WOODEN SHELF

Item no.	Dimensions	RAL/Decor
FAS010	L40 x D32,5 cm	Optional
FAS010	L75 x D32,5 cm	Optional

### SIGN

Item no.	Dimensions	RAL/Decor
01735953	A5	Optional

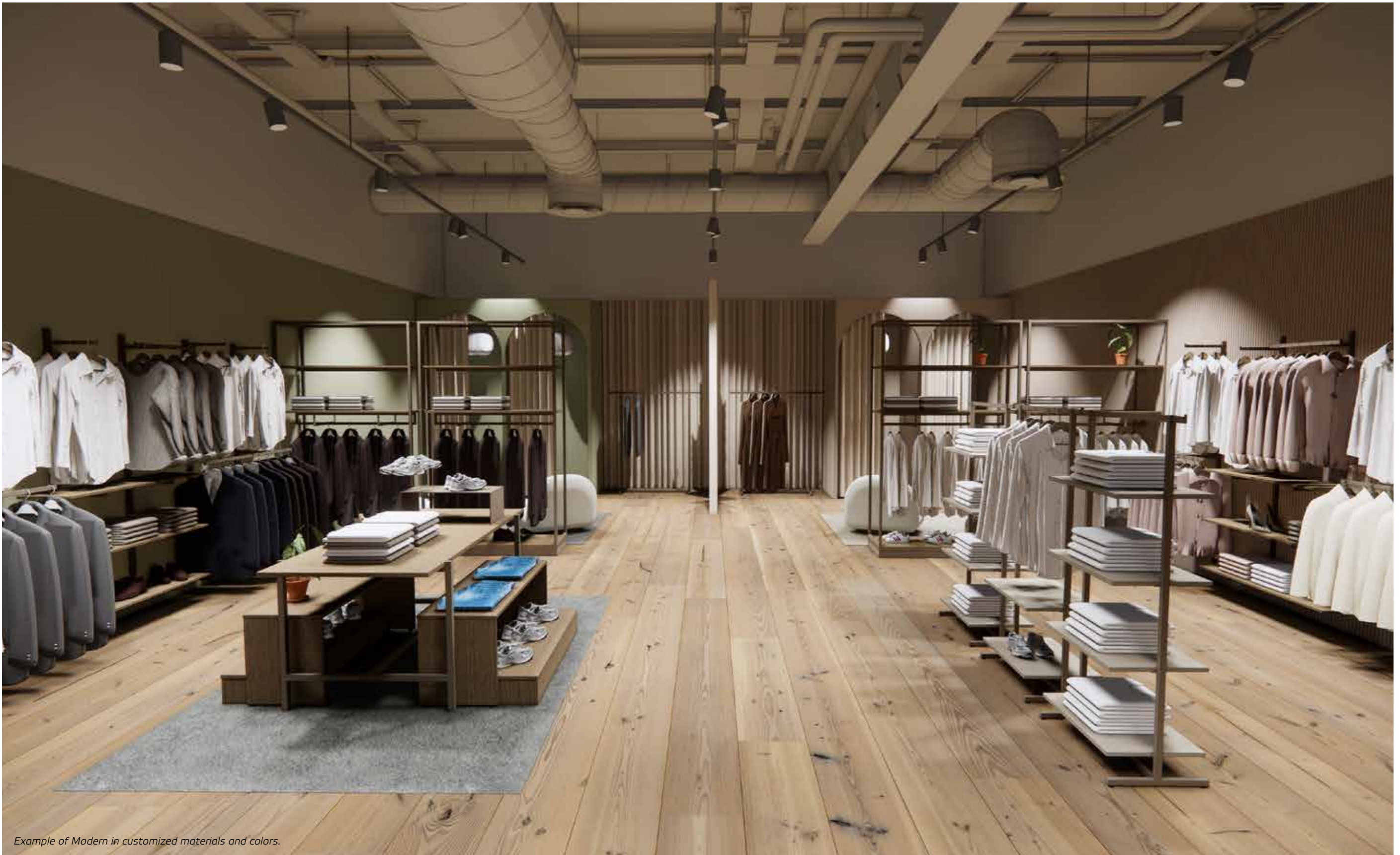
### FRONT HOOK 30L

Item no.	Dimensions	RAL/Decor
02109583	L30 cm	Optional

### DISTANCE BRACE FOR MOUNTING

Item no.	Dimensions	RAL/Decor
08257020		





*Example of Modern in customized materials and colors.*

Example of Modern in customized materials and colors.





Example of Modern in customized materials and colors.

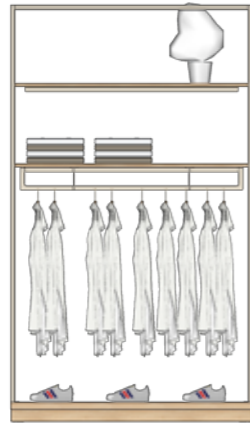


Example of Modern in customized materials and colors.

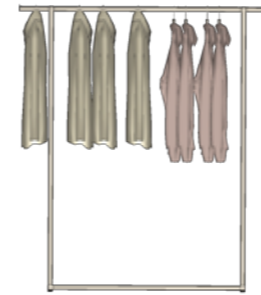


## DRAWING STANDARDS

Capacity for folded and hanging styles



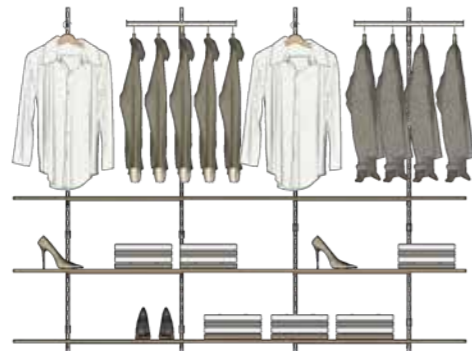
**Floor display**  
 long shelf 1200 (1): 15  
 long siderack 1200 (1): 50  
  
 capacity: 65  
 folded: 15  
 hanging: 50



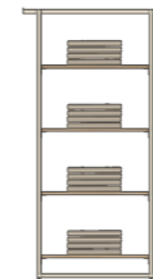
**Rack display**  
 long siderack 1200 (1): 50  
  
 capacity: 50  
 hanging: 50



**T-rack**  
 short siderack 600 (1): 25  
  
 capacity: 25  
 hanging: 25



**Wall - A**  
 long shelf 1200 (4): 60  
 short siderack 600 (2): 50  
 frontarm (2): 20  
  
 capacity: 130  
 folded: 60  
 hanging: 70



**Rack Display - Shelf**  
 short shelf 600 (4): 20  
  
 capacity: 20  
 folded: 20



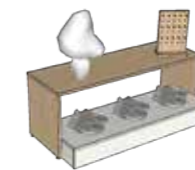
**Rack Display - Rack**  
 short rack 600 (1): 25  
 short shelf 600 (1): 5  
  
 capacity: 30  
 folded: 5  
 hanging: 25



**Wall - B**  
 frontarm (1): 10  
 short siderack 600 (1): 25  
  
 capacity: 35  
 hanging: 35



**Table**  
 large table 1800 (1): 20  
  
 capacity: 20  
 folded: 20



**Table**  
 small table 1200 (1): 15  
  
 capacity: 15  
 folded: 15

## | COUNTER

Wanzl Nordic has an extensive portfolio of carefully designed counter solutions, which can be customised with colors and decórs to match any store concept – with no loss of functionality.

## COUNTER ELEMENTS



**120M COUNTER MODULE WITH LAMINATE TABLE TOP WITH VERTICAL BRACING**

Item no.	Dimensions	RAL/Decor
02742010	L120 x D60 x H98 cm	Optional



**80M COUNTER MODULE WITH LAMINATE WORKTOP WITHOUT ACCESSORIES**

Item no.	Dimensions	RAL/Decor
02742110	L80 x D60 x H98 cm	Optional



**40M COUNTER MODULE WITH LAMINATE WORKTOP WITHOUT ACCESSORIES**

Item no.	Dimensions	RAL/Decor
02742120	L40 x D60 x H98 cm	Optional

Basic counter modules can be customized with shelving, drawers, doors, etc.

## COUNTER ELEMENTS



**40M COUNTER MODULE WITH STAINLESS TABLE TOP**

Item no.	Dimensions	RAL/Decor
02742130	L40 x D60 x H40 cm	Optional



**90° MODULE WITH LAMINATE TABLE TOP**

Item no.	Dimensions	RAL/Decor
02742150	D60 x H98 cm	Optional



**45° MODULE WITH LAMINATE TABLE TOP**

Item no.	Dimensions	RAL/Decor
02742160	D60 x H98 cm	Optional

Basic counter modules can be customized with shelving, drawers, doors, etc.



## | DECORS & COLORS

We have a standard range of the most popular and cost-effective metal colors and decórs for fixtures and furniture. However almost any surface treatment and material are available and our designers make sure to align expectations and budget with you, before we customize your store concept from our starndard shop fitiings.



**COLORS**

Wanzl Nordic's advanced powder coating facilities can paint in almost any color and surface and no customer should feel limited in the design and expression of their store concept.

In order to have a more sustainable production set-up, we have chosen to offer a carefully curated selection of our most popular colors. In this way we can increase effectiveness on our processes, keep our prices competitive and make sure to keep as sustainable a production as possible.

As mentioned: we paint in (almost) every color and here you can get an overview of the colors offered within the standard range.

EXP. NO 05002 RAL 5002	EXP. NO 00630 RAL 5007	EXP. NO 05024 RAL 5024	EXP. NO 00631 RAL 5009
EXP. NO 06013 RAL 6013	EXP. NO 00635 RAL 6003	EXP. NO 00632 RAL 6005	EXP. NO 00634 RAL 6007
EXP. NO 00558 RAL 1018	EXP. NO 02009 RAL 2009	EXP. NO 03000 RAL 3000	EXP. NO 00633 RAL 3009
EXP. NO 00032 RAL 9016	EXP. NO 09010 RAL 9010	EXP. NO 00511 RAL 9003	EXP. NO 00030 RAL 9005



WHITE	BLACK
GRAPHITE	ANTHRACITE
VINTAGE WENGÉ	COTTAGE PINE ANTIQUE
PARIS OAK	SMOKET LIBERTY ELM

EXP. NO 00144 RAL 9005	EXP. NO 00510 RAL 7022	EXP. NO 00432 RAL 7032	EXP. NO 00585 RAL 7043	EXP. NO 00555 RAL 7005	EXP. NO 07015 RAL 7015	EXP. NO 07012 RAL 7012
EXP. NO 07016 RAL 7016	EXP. NO 07024 RAL 7024	EXP. NO 07042 RAL 7042	EXP. NO 00570 RAL 7047	EXP. NO 07035 RAL 7035	EXP. NO 07045 RAL 7045	EXP. NO 07011 RAL 7011
EXP. NO 00391 RAL 7031	EXP. NO 00592 RAL 1013	EXP. NO 08019 RAL 8019	EXP. NO 00381 RAL 9006	EXP. NO 00371 RAL 9006	EXP. NO 00502 RAL 9007	EXP. NO 00467 RAL 8028

**DECORS**

We offer a carefully curated selection of decors (laminates, melamine and veneer) for any surface in the various furniture systems: counters, sales table tops, podiums and shelves.

As for the colors, we of course design and produce in many more surfaces to match your design concept, expectations and budget.

MONGORI OAK	DARK SELECT WALNUT	VICENZA OAK
SLAVONIA OAK	LIGHT SELECT WALNUT	GOLD CRAFT OAK
PIETRA GREY	ARIZONA PINE	STONEOAK

VISIT US AT  
[www.wanzl.dk](http://www.wanzl.dk)  
[www.wanzl.no](http://www.wanzl.no)  
[www.wanzl.se](http://www.wanzl.se)  
[www.wanzl.fi](http://www.wanzl.fi)



**DENMARK**  
**Wanzl Nordic A/S**  
 Toftegaardsvej 4  
 DK-8370 Hadsten

T: +45 87 612 200

info.dk@wanzl.com  
 www.wanzl.dk

**NORWAY**  
**Wanzl Nordic AS**  
 Thorøyaveien 21  
 N-3209 Sandefjord

T: +47 33 423 280

info.no@wanzl.com  
 www.wanzl.no

**SWEDEN**  
**Wanzl Nordic AB**  
 Dammvägen 1  
 S-571 75 Fredriksdal

T: +46 (0)10 - 47 61 700

info.se@wanzl.com  
 www.wanzl.se

**FINLAND**  
**Wanzl Nordic Oy**  
 Tähtäinkuja 3  
 FI-01530 Vantaa

T: +358 20 741 4640

info.fi@wanzl.com  
 www.wanzl.fi

**LATVIA**  
**SIA Wanzl Nordic**  
 Kapsēdes iela 2  
 LV-3414 Liepāja

T: +371 63 11 2717

info.lv@wanzl.com