

# BakeOff® display

Attractive presentation of baked goods



# BakeOff® display

*For the attractive presentation and sale of baked goods*

- > *Transparent design for high product presence*
- > *Convenient access to baked goods on all levels*
- > *Excellent product protection thanks to hygiene flaps*



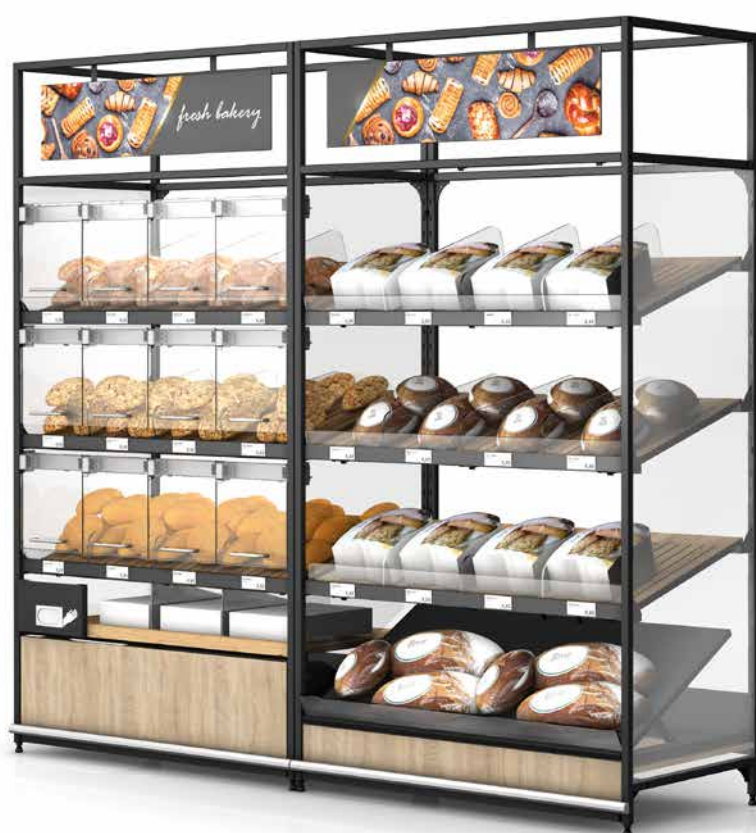
## Attractive baked goods presentation

The Wanzl BakeOff display combines sophisticated design and features designed to promote sales. The modern design of the units blend harmoniously with the sales room.

## Transparent design

The high level of transparency of the BakeOff display gives customers a good overview of the baked goods on offer. The integrated LED lighting saves energy and presents the baked goods in a pleasant light.





### Features designed to promote sales

The angle of the shelves can be adjusted to make sure products easily slide towards the front ensuring maximum visibility. This helps to generate a high level of product density. The suspended graphic panels make sure that your baked goods attract optimum attention.

### Clean and hygienic

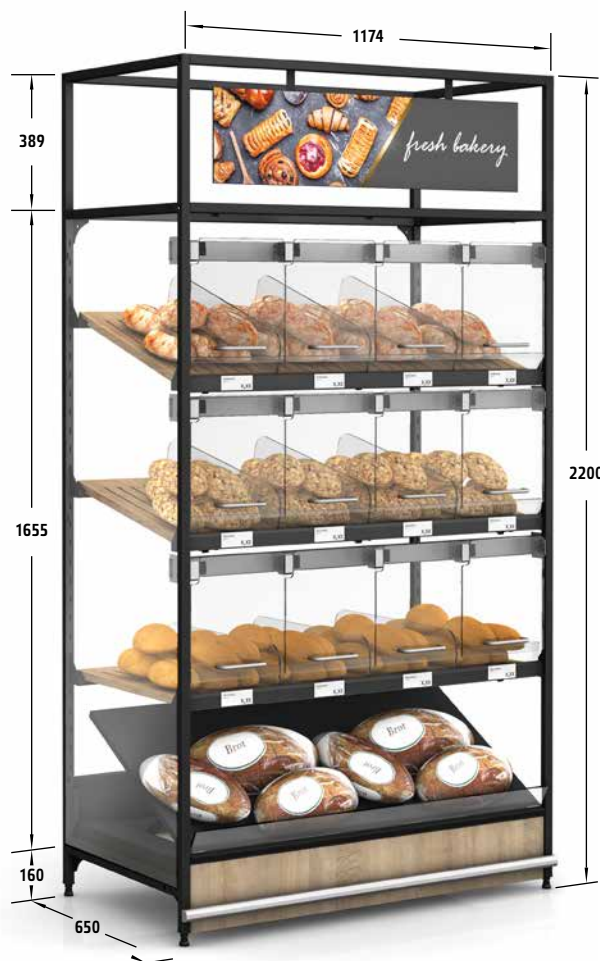
In the BakeOff display all the baked goods are hygienically protected behind closed hygiene flaps. The sides of the sales units are also closed. Baked goods are removed either by means of tongs or disposable gloves.

# BakeOff® display

Version: folding shelf on the lowest level

## Module components:

- > Base frame
- > Graphic frame
- > 3 x wooden rack incl. price label holder
- > 9 dividers
- > 3 x plexiglass stops
- > 4 x LED strips
- > Metal components coated in Jet black, RAL 9005
- > Top acrylic cover (for version without glass flaps)
- > 12 x front flaps incl. closing mechanism (for version with glass flaps)
- > Folding shelf on the lowest level with plexiglass stop



### WITH GLASS FLAPS

Item number 12.88038.95-0001 (Bardolino Oak Grey finish)

Item number 12.88038.95-0002 (Black finish)



### WITHOUT GLASS FLAPS

Item number 12.87586.95-0001 (Bardolino Oak Grey finish)

Item number 12.87586.95-0002 (Black finish)

Magnetic foil for top front side available on request.

1x side panel 77.73846.07-0000 is required per tower

1x side panel set 12.88264.95-0001 is required per row

# BakeOff® display

Version: drawer with bag storage and glove dispenser

## Module components:

- > Base frame
- > Graphic frame
- > 3 x wooden rack incl. price label holder
- > 12 dividers
- > 3 x plexiglass stops
- > 4 x LED strips
- > Metal components coated in Jet black, RAL 9005
- > Top acrylic cover (for version without glass flaps)
- > 12 x front flaps incl. closing mechanism (for version with glass flaps)
- > Drawer with bag storage and glove dispenser



### WITH GLASS FLAPS

Item number 12.87812.95-0001 (Bardolino Oak Grey finish)

Item number 12.87812.95-0002 (Black finish)



### WITHOUT GLASS FLAPS

Item number 12.87360.95-0001 (Bardolino Oak Grey finish)

Item number 12.87360.95-0002 (Black finish)

Magnetic foil for top front side available on request.

# BakeOff® display

*Version: drawer with returns container and storage space for vacuum cleaner*

## Module components:

- > Base frame
- > Graphic frame
- > 3 x wooden rack incl. price label holder
- > 9 dividers
- > 3 x plexiglass stops
- > 4 x LED strips
- > Metal components coated in Jet black, RAL 9005
- > Top acrylic cover (for version without glass flaps)
- > 12 x front flaps incl. closing mechanism (for version with glass flaps)
- > Drawer with returns container and storage space for vacuum cleaner
- > Vacuum cleaner available as an option



### WITH GLASS FLAPS

Item number 12.88151.95-0001 (Bardolino Oak Grey finish)

Item number 12.88151.95-0002 (Black finish)

RETURNS CONTAINER AND STORAGE  
SPACE FOR VACUUM CLEANER



### WITHOUT GLASS FLAPS

Item number 12.87699.95-0001 (Bardolino Oak Grey finish)

Item number 12.87699.95-0002 (Black finish)

Magnetic foil for top front side available on request.

1x side panel 77.73846.07-0000 is required per tower

1x side panel set 12.88264.95-0001 is required per row



# BakeOff® display

Version: for bread slicer

## Module components:

- > Base frame
- > Graphic frame
- > 2x wooden rack incl. price label holder
- > 6 dividers
- > 2x plexiglass stops
- > 2 x LED strips
- > Metal components coated in Jet black, RAL 9005
- > Top acrylic cover (for version without glass flaps)
- > 4x front flaps incl. Closing mechanism (for version with glass flaps)



**WITH GLASS FLAPS**  
Item number 12.87925.95-0001



**WITHOUT GLASS FLAPS**  
Item number 12.87473.95-0001

Magnetic foil for top front side available on request.

Variant: without bread slicer

1x side panel 77.73846.07-0000 is required per tower

1x side panel set 12.88264.95-0001 is required per row

# BakeOff® display

Version: coffee station

## Module components:

- > Base frame
- > Graphic frame
- > Service station
- > 2x frames for prices and advertising
- > Metal components coated in Jet black, RAL 9005
- > Underbench cabinet
- > Serviette storage
- > 2x cup dispensers
- > Drawer for coffee knock box
- > 1 x LED



## BAKEOFF® DISPLAY COFFEE STATION

Item number 12.89281.95-0001 (Bardolino Oak Grey finish)

Item number 12.89281.95-0002 (Black finish)

Magnetic foil for top front side available on request.

Variant: without coffee machine

1x side panel 77.73846.07-0000 is required per tower

1x side panel set 12.88264.95-0001 is required per row



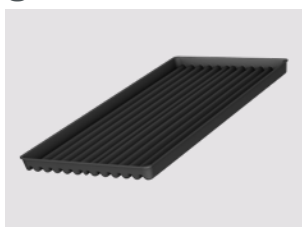
# Accessories

ACCESSORIES FOR THE BAKEOFF DISPLAY, mandatory:	Item number
<b>BakeOff display side panel set</b> (1x required per row; consists of 2x base and 1x side panel)	12.88264.95-0001
<b>Side panel (1x required per tower)</b>	77.73846.07-0000
<b>Scanner price rail</b> , height 40 mm, length 1,120 mm	77.91680.07-9005
ACCESSORIES FOR THE BAKEOFF DISPLAY, optional:	
<b>1 BakeOff display wooden shelf with price label</b> (Please order scanner price rail separately)	77.32252.95-9005
<b>2 Plastic tray</b> 600 x 264 x 30 mm, 12 units per module	77.12241.07-8022
<b>3 Tong</b> with coiled cable and tong holder	77.12467.95-9005
<b>4 Woven basket</b>	77.12354.78-0000
<b>5 Vacuum cleaner</b>	77.06654.95-0000
<b>6 Magnetic foil</b> for front side	Available on request
<b>Back panel set</b> for use as a front filler	12.63762.95-0000

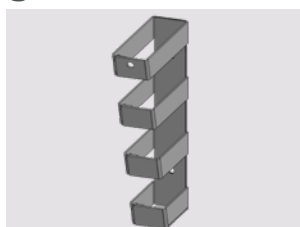
1



2



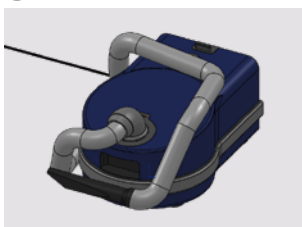
3



4



5



6



# Store Impressions



EUROSHOP 2020



EUROSHOP 2023



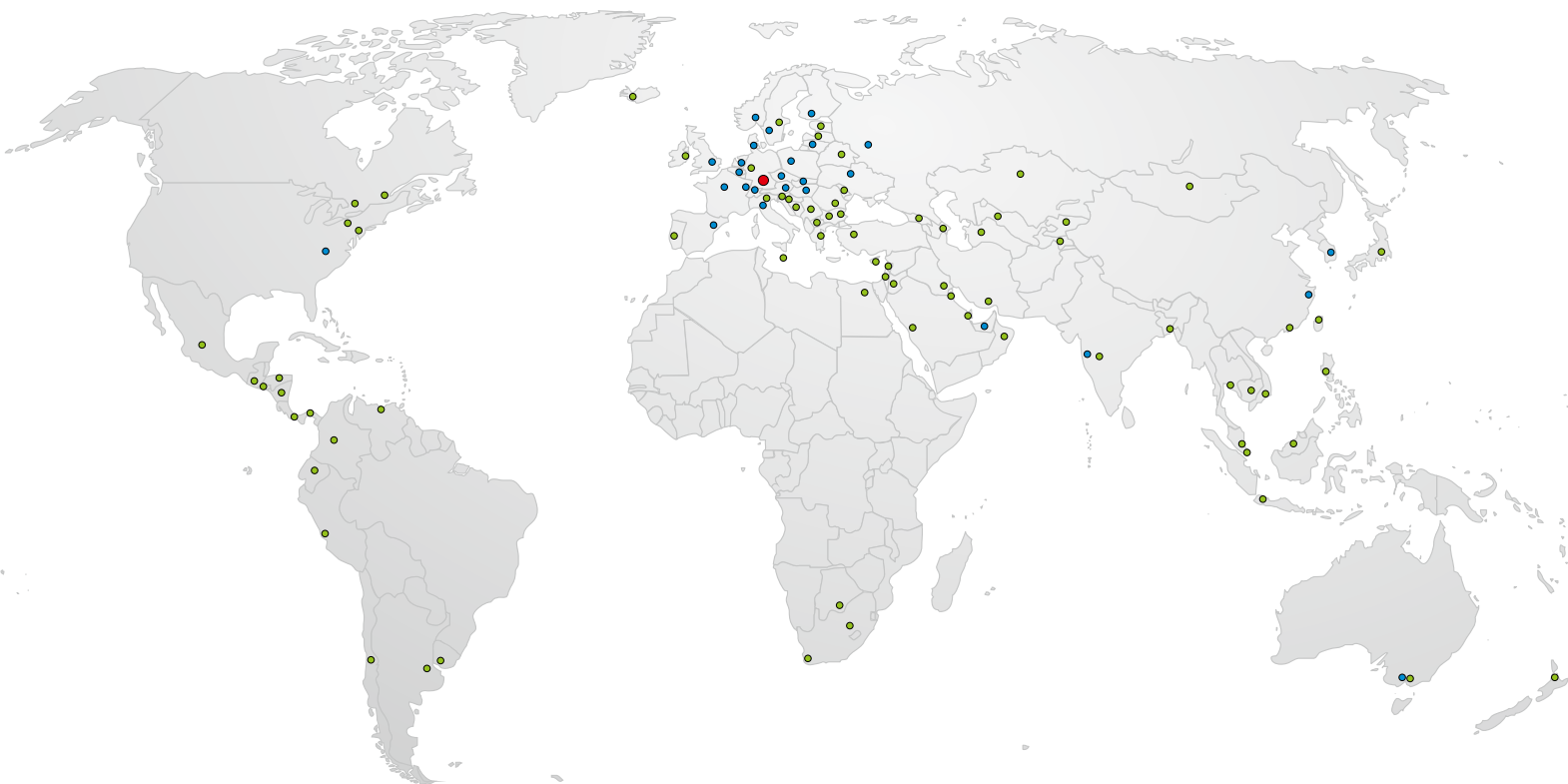


EUROSHOP 2020



EUROSHOP 2023





## Wanzl worldwide

- Head Office
- Subsidiaries
- Partners



**GERMANY**  
Wanzl GmbH & Co. KGaA  
Rudolf-Wanzl-Straße 4  
89340 Leipheim

Phone +49 (0) 82 21 / 7 29-0

[info@wanzl.com](mailto:info@wanzl.com)  
[www.wanzl.com](http://www.wanzl.com)

**GREAT BRITAIN**  
Wanzl Ltd.  
Europa House  
Heathcote Lane  
Warwick CV34 6SP

Phone +44 (0) 1926 / 45 19 51

[enquiries@wanzl.co.uk](mailto:enquiries@wanzl.co.uk)  
[www.wanzl.com](http://www.wanzl.com)

**AUSTRALIA**  
Wanzl Australia Pty Ltd  
3 Haymer Ct,  
Braeside VIC 3195

Phone +61 (0) 3 / 9808 2299

[info.au@wanzl.com](mailto:info.au@wanzl.com)  
[www.wanzl.com](http://www.wanzl.com)