

LAN Checkout Manager

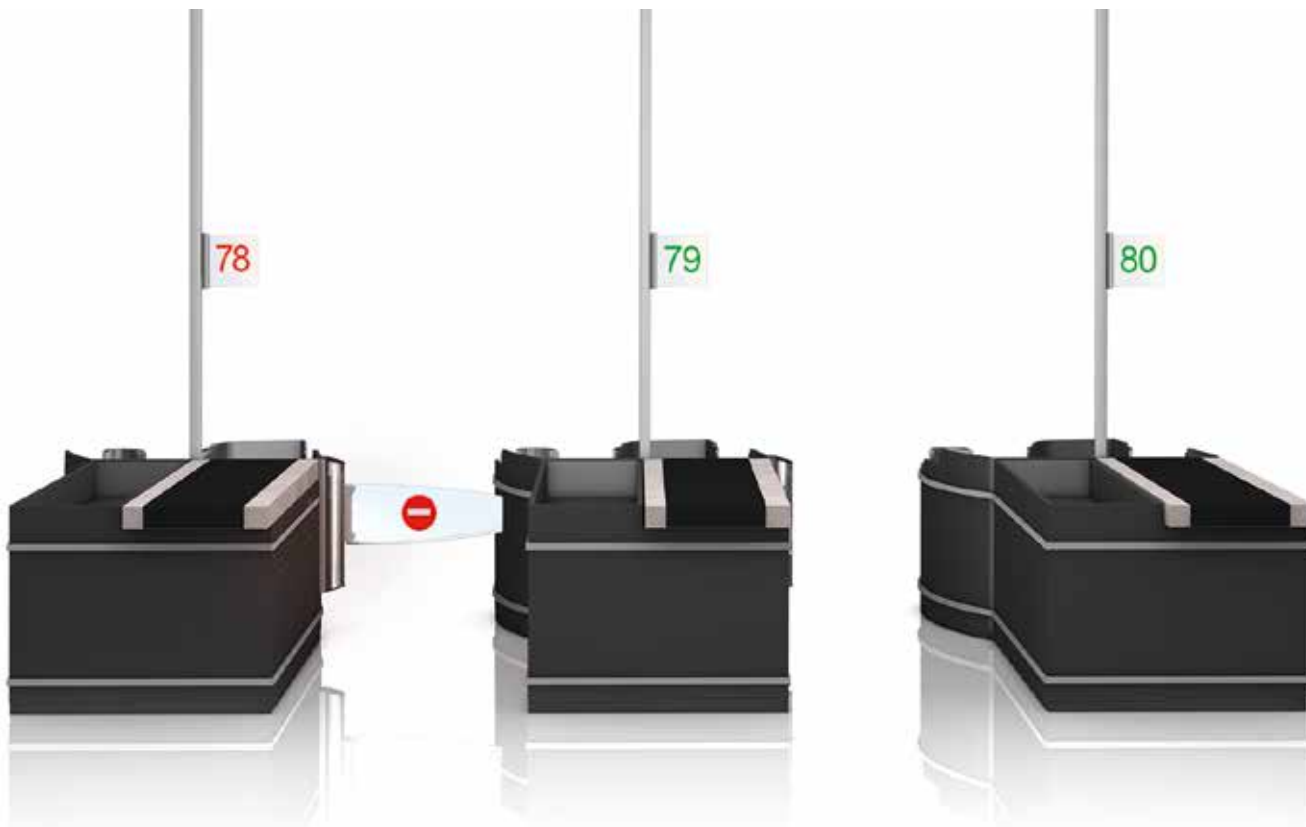
Increasing satisfaction through optimum customer flow management



LAN Checkout Manager

Checkout management system for controlling up to 80 checkouts

- > Reduced waiting times for customers enabled by targeted deployment of staff
- > Future-proof thanks to state-of-the-art technology and interfaces
- > Individual voice prompts – maximum benefit for customers and staff



LAN CHECKOUT MANAGER

LED display unit

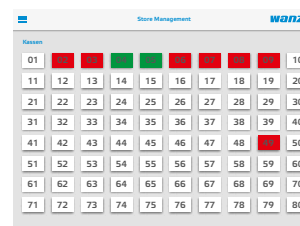
The display unit draws attention to the checkout area and informs your customers whether the relevant checkout is available. Voice announcements in the checkout area provide additional information about checkouts opening and closing. This helps avoid irritating waiting times.



Design pend.

Easy to use



Using the LAN Checkout Manager is easy and intuitive, both for checkout staff and supervisors.



LAN Checkout Manager

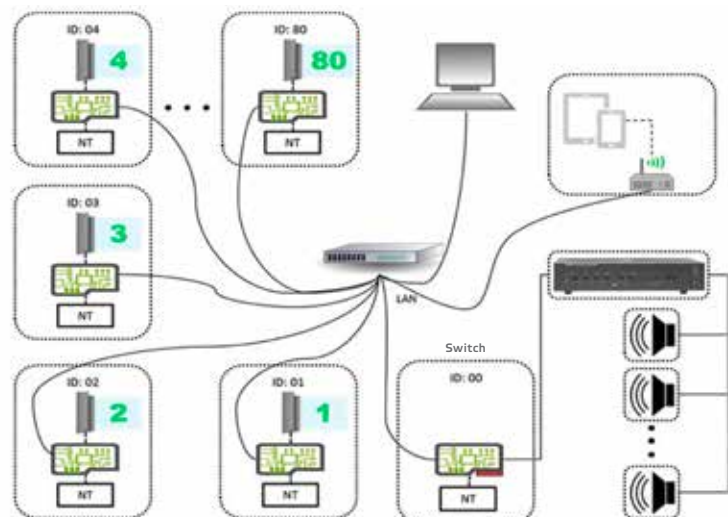
A complete solution_MADE BY WANZL

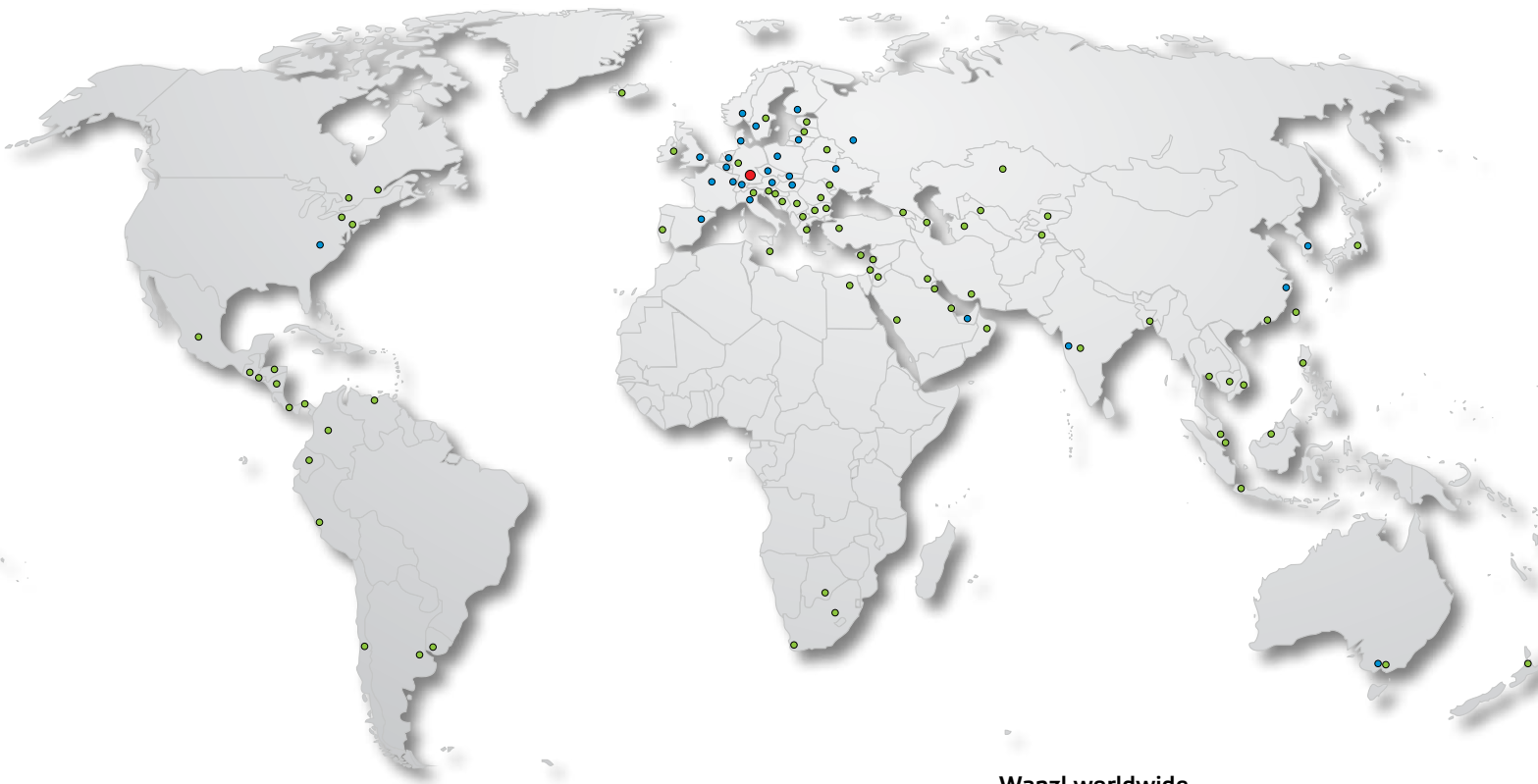
■ The LAN Checkout Manager reliably coordinates control and monitoring of up to 80 cash desks. With the help of a mobile device and the browser-based interface, cash desk monitoring ensures optimal checkout use and reduced customer waiting time through targeted staff deployment. Voice announcements keep customers informed about checkouts opening and closing. Checkout staff can also call store or branch management.

| LAN Checkout Manager | | | |
|---|--|---|-------------------|
| Kit | Consists of | | Prod. no. |
| Basic package | 1x CM LAN Master Control, 1x acrylic sign holder with LED strip, 1x CM LAN Teller Control, 250m cable, 1x 100 V amp, 1x cinch cable, 1x power unit | | 23.31570.95-0000 |
| Extension for 1 teller | 1x CM LAN Teller Control, 1x acrylic sign holder with LED strip, 1x power unit | | 23.31571.95-0000 |
| Teller button (open/close, call store manager) | without checkout software control, 8 m cable | | 23.31799.95-0000 |
| Display units and control | | | |
| LAN PC Checkout Manager for store management | | | 98.76426.00-0000 |
| 10-inch tablet | | | 98.77059.00-0000 |
| Accessories | | | |
| Signs | | | |
|  | |  | |
| KLS acrylic sign no. "1" left | 97.30161.07-0001 | KLS acrylic sign no. "1" right | 97.30162.07-0001 |
| KLS acrylic sign no. "2" left | 97.30161.07-0002 | KLS acrylic sign no. "2" right | 97.30162.07-0002 |
| KLS acrylic sign no. "3" left | 97.30161.07-0003 | KLS acrylic sign no. "3" right | 97.30162.07-0003 |
| ... | 97.30161.07-00... | ... | 97.30162.07-00... |
| KLS acrylic sign no. "80" left | 97.30161.07-0080 | KLS acrylic sign no. "80" right | 97.30162.07-0080 |

Installation overview

Systematic set-up and correct placement of all elements. The LAN Checkout Manager system is particularly impressive when all the components are able to reliably interact together. Employee information is an essential part of the system – it guarantees timely occupation and opening of checkouts as well as customer information relating to which checkouts are available.





Wanzl worldwide

- Head Office
- Subsidiaries
- Partners



GERMANY

Wanzl Metallwarenfabrik GmbH
Rudolf-Wanzl-Straße 4
89340 Leipheim

Phone +49 (0) 82 21 / 729-0
Fax +49 (0) 82 21 / 729-1000

info@wanzl.de
www.wanzl.com

GREAT BRITAIN

Wanzl Ltd.
Europa House
Heathcote Lane
Warwick CV34 6SP

Phone +44 (0) 1926 / 45 1951
Fax +44 (0) 1926 / 45 1952

enquiries@wanzl.co.uk
www.wanzl.com

AUSTRALIA

Wanzl Australia Pty. Ltd.
97 Highbury Road
BURWOOD VIC 3125

Phone +61 (0) 3 / 98 08 22 99
Fax +61 (0) 3 / 98 08 22 66

info@wanzl.com.au
www.wanzl.com