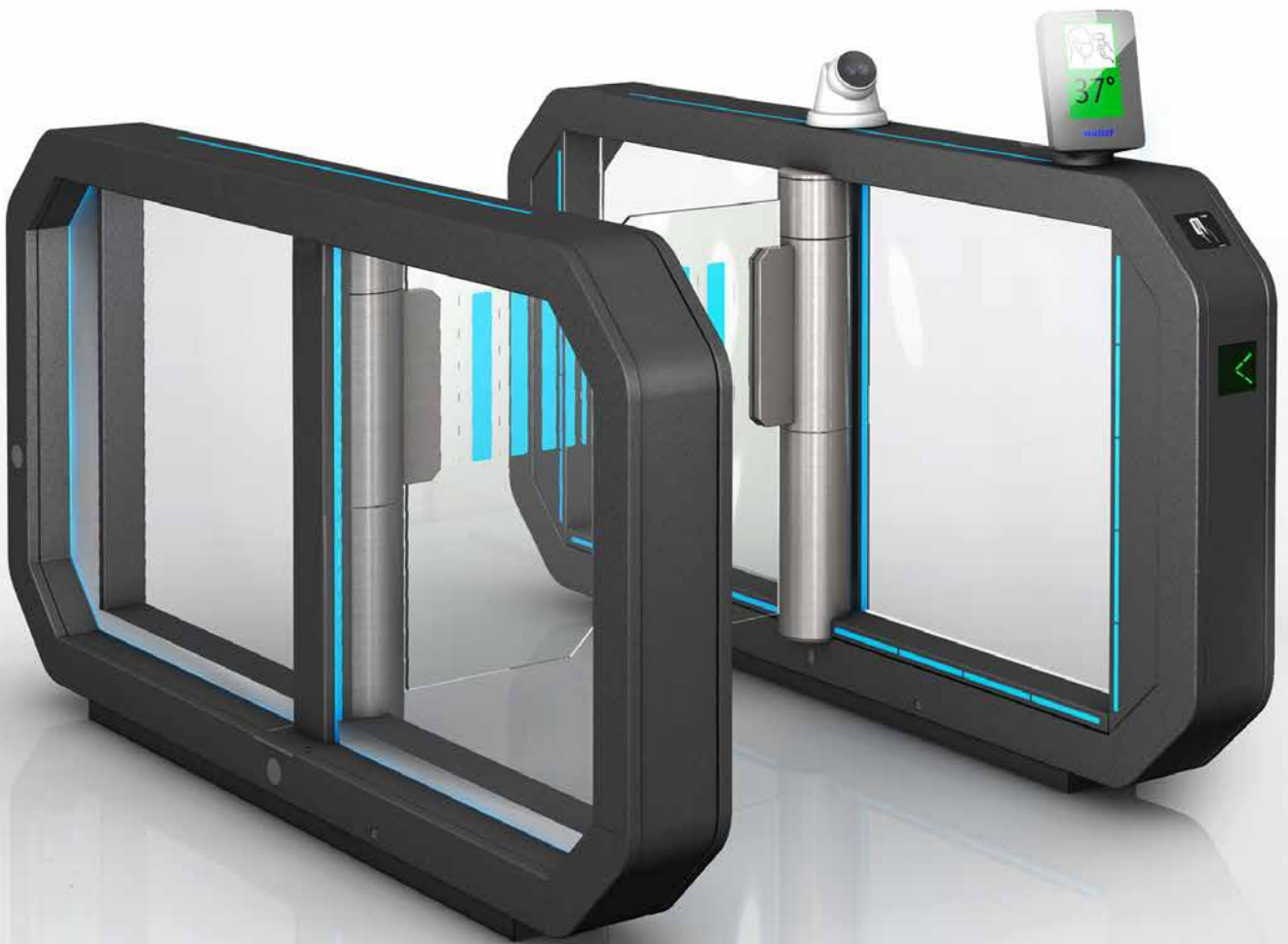


# Galaxy Gate<sup>®</sup> 1.1 TS

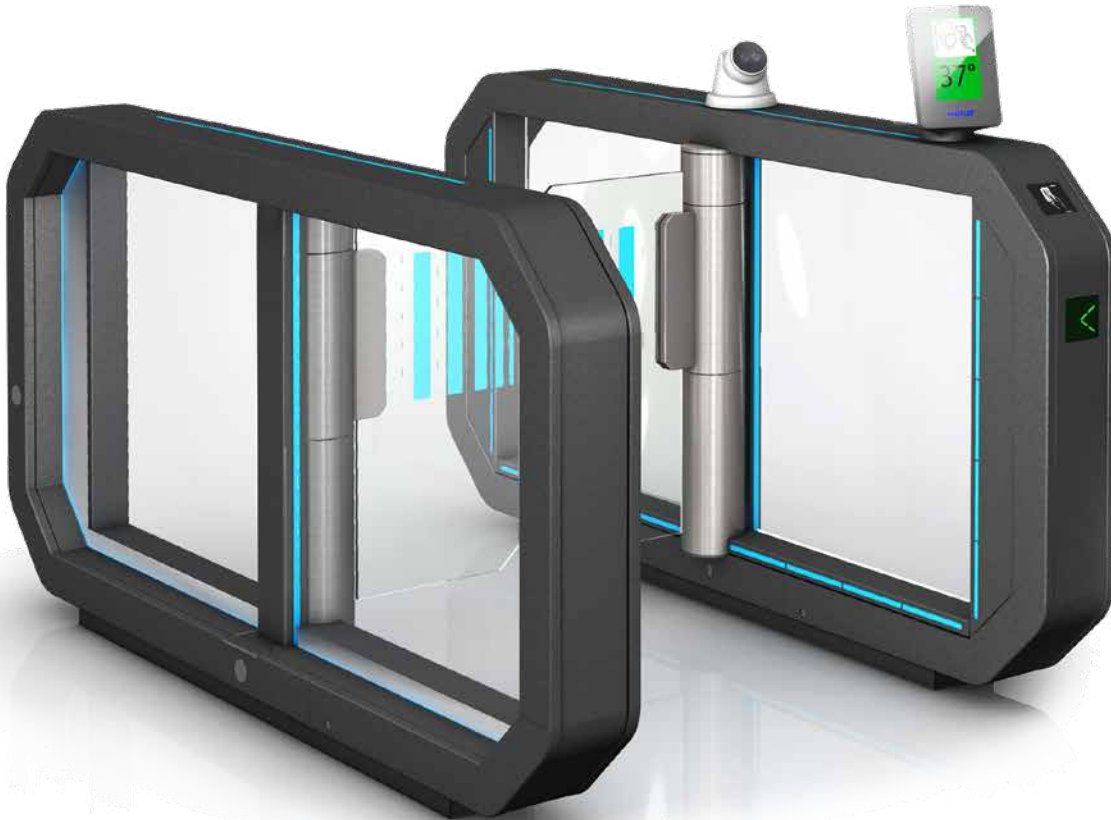
Access control system with body temperature screening



# Galaxy Gate<sup>®</sup> 1.1 TS

Access control system with body temperature screening

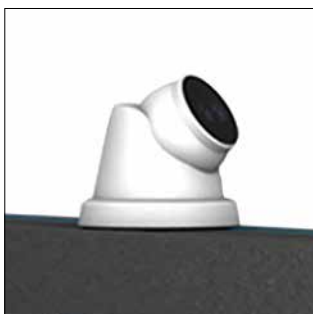
- > Non-contact body temperature screening
- > High measurement accuracy  $\pm 0.5^{\circ}\text{C}$
- > Adjustable upper limit for permitted temperature



■ The tried and trusted Galaxy Gate with integrated temperature scanner uses a thermal imaging camera to scan body temperature entirely automatically. Measurement of body temperature requires no physical contact and

assists in determining acute fever. As soon as a value above the limit is detected, the gate will not open and a message detailing the next steps will appear on the display. An alarm can be integrated as an option.

## Camera



The built-in thermal imaging camera has been specially developed for measuring body temperature and reliably provides alerts if values above the limit are detected.

### Technical details:

- 160x120 pixel thermal detector
- Point, line and zone for measuring temperature
- Temperature measurement range: 30 °C to 45 °C; Measurement accuracy:  $\pm 0.5^{\circ}\text{C}$
- 3D DNR, improvement in image detail

# Galaxy Gate® 1.1

## Details of the Galaxy Gate® 1.1



The access control system protects sensitive areas while creating secure access for employees. The number of persons in the building, the approval of access authorisations, and digital time recording can be controlled via a central dashboard.

### Technical details:

- Flexible reader devices = reliable identification
- LED chase lights on both sides signal the direction of movement
- 53 sensors detect persons and objects
- Programmable acoustic and visual signal
- Standard panic and fire alarm opening

# Gates

*with hand sanitiser dispenser*

- > Access is granted only after the sanitiser dispenser has been used
- > Sanitiser is sprayed directly onto hands
- > Can be flexibly combined with all Wanzl gates

■ **Sensitive company areas can be protected** beginning at the entrance. The entrance system checks whether hands have been sanitised, without the need to assign an employee for monitoring. The gate then opens for entrance or exit – depending on customer requirements. A variety of models are available, depending on security requirements and the space available.

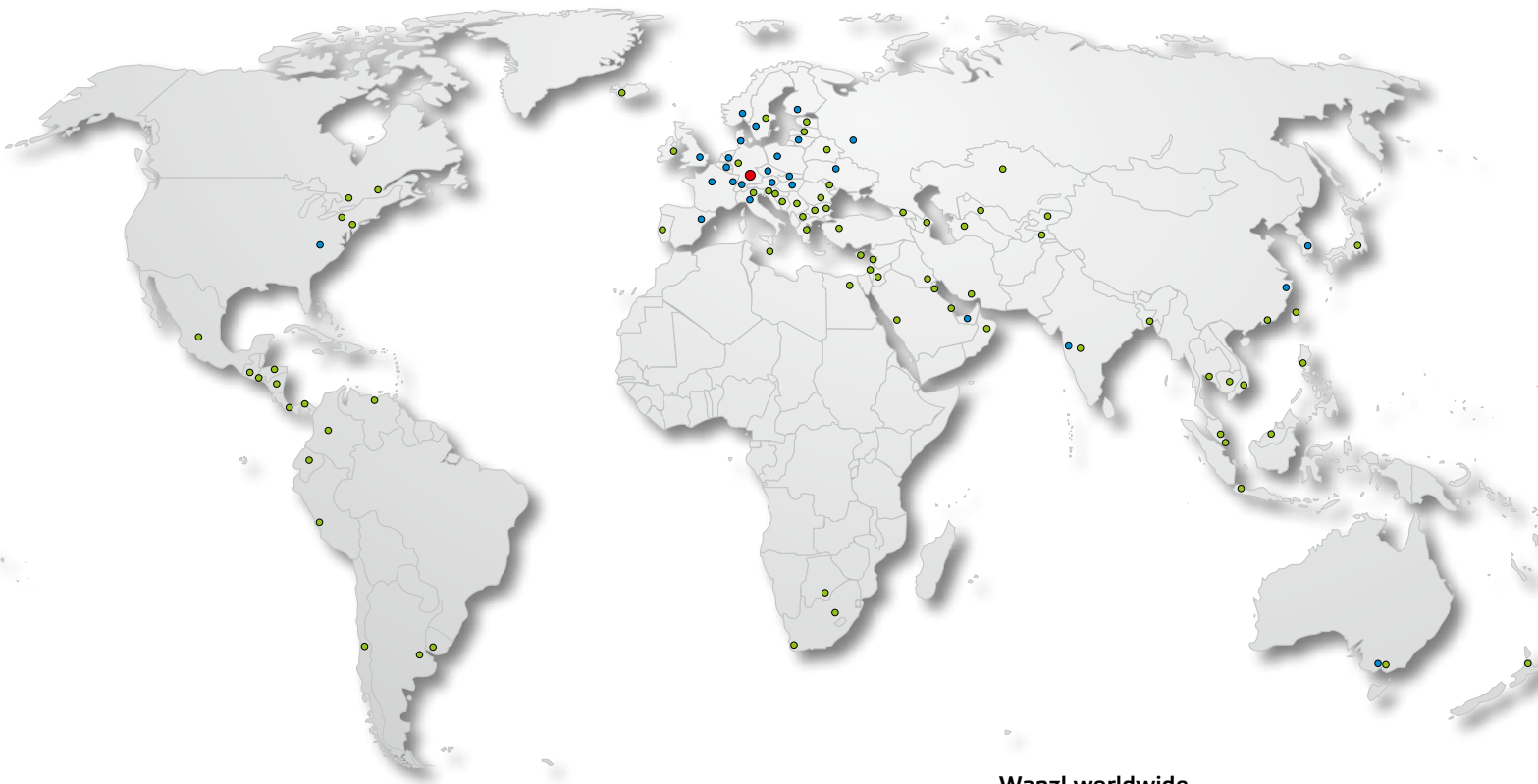


The Galaxy Gate can also be fitted with a sanitiser dispenser. The dispenser can be integrated in the controls of the system, allowing the gate to open only after the sanitiser has been used.



EASYGO HD\_turnstile

TECHNOPORT HD\_entrance system



## Wanzl worldwide

- Head Office
- Subsidiaries
- Partners



### GERMANY

Wanzl GmbH & Co. KGaA  
Rudolf-Wanzl-Straße 4  
89340 Leipheim

Phone +49 (0) 82 21 / 729-0  
Fax +49 (0) 82 21 / 729-1000

info@wanzl.com  
www.wanzl.com

### GREAT BRITAIN

Wanzl Ltd.  
Europa House  
Heathcote Lane  
Warwick CV34 6SP

Phone +44 (0) 1926 / 45 1951  
Fax +44 (0) 1926 / 45 1952

enquiries@wanzl.co.uk  
www.wanzl.com

### AUSTRALIA

Wanzl Australia Pty. Ltd.  
97 Highbury Road  
BURWOOD VIC 3125

Phone +61 (0) 3 / 98 08 22 99  
Fax +61 (0) 3 / 98 08 22 66

info.au@wanzl.com  
www.wanzl.com